



Australian Government
Australian Research Council

Professor Margaret Sheil

Fine tuning assessment
can we achieve a better
balance?



Outline

- ARC at a glance
- Current ARC Selection Processes
- Some preliminary thoughts and the way forward



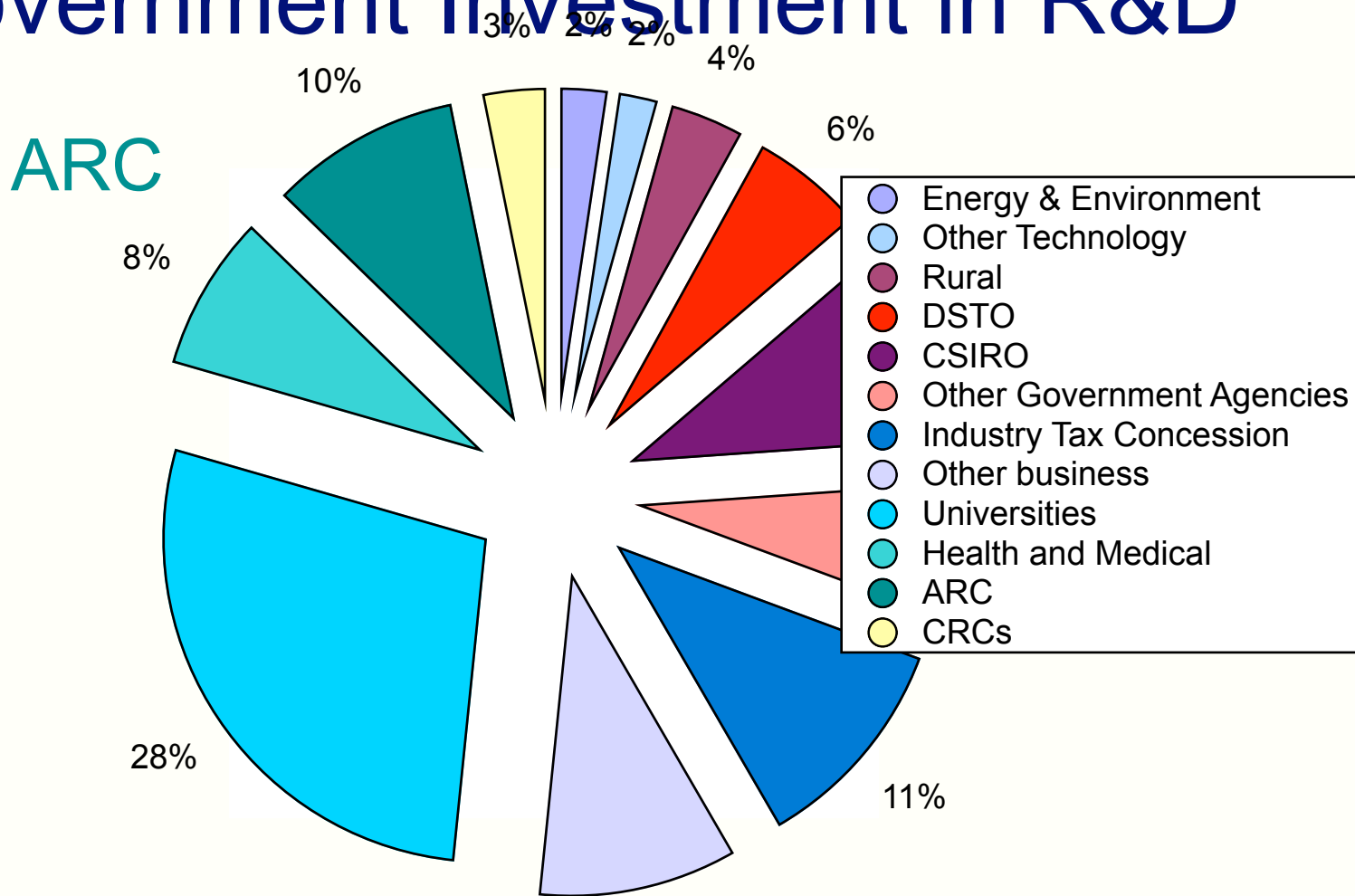
Mission

- To advance Australia's research excellence to be globally competitive and deliver benefits (commercial and public good) to the community





Government Investment in R&D

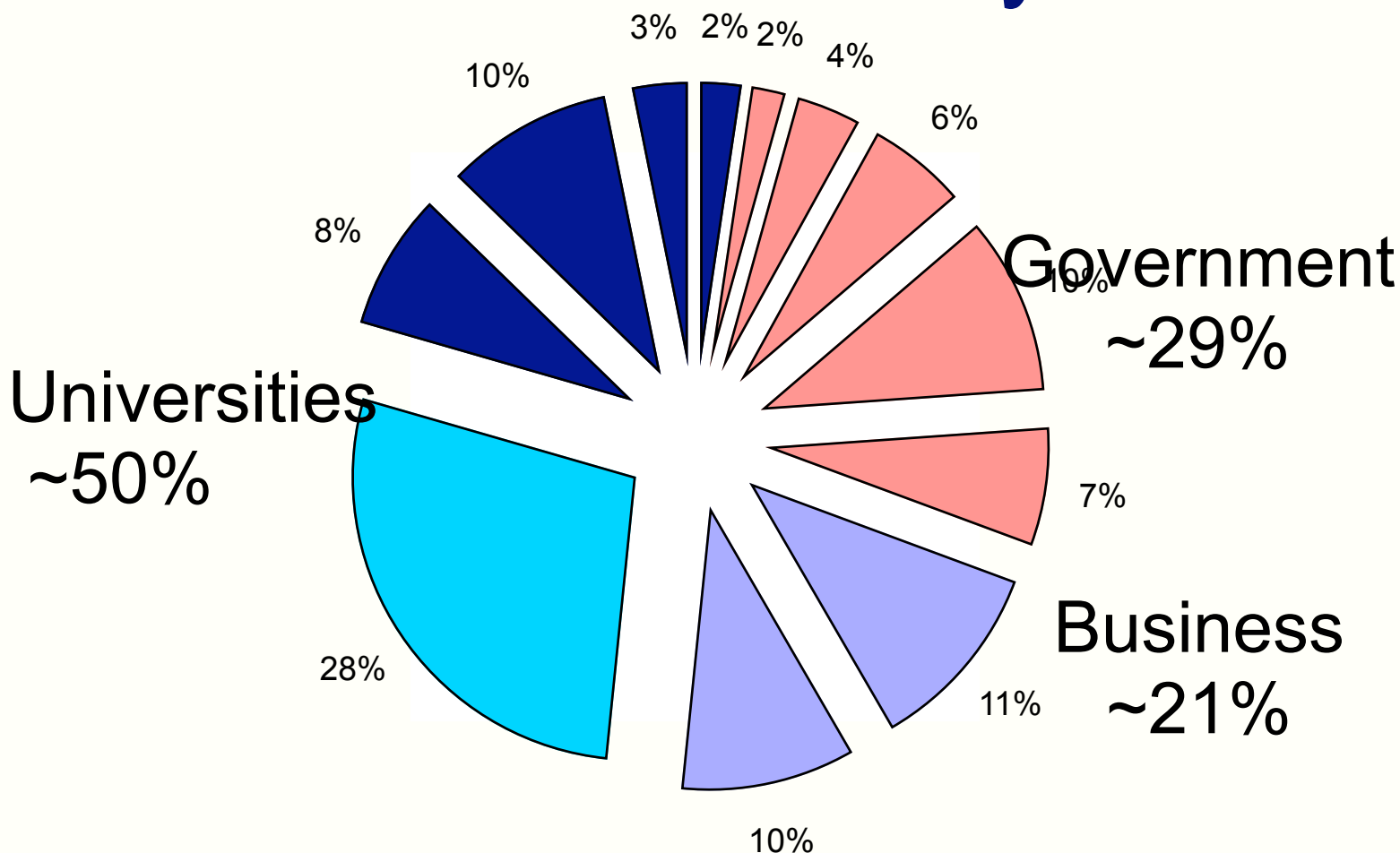


FY 06-07 \$5,973.9 M

10%



Investment in R&D by sector





ARC Funding

\$ m

01-02

07-08





What do we want to fund?

- Excellence
- Capacity
- Innovation
- Scale and focus
- Strategic research
- Infrastructure

What do we fund?





Discipline Clusters

- Physical, Chemical and Earth Sciences (PCE)
- Humanities and Creative Arts (HCA)
- Engineering and Environmental Sciences (EE)
- Social, Behavioural and Economic Sciences (SBE)
- Mathematics, Information and Communication Sciences (MIC)
- Biological Sciences and Biotechnology (BSB)

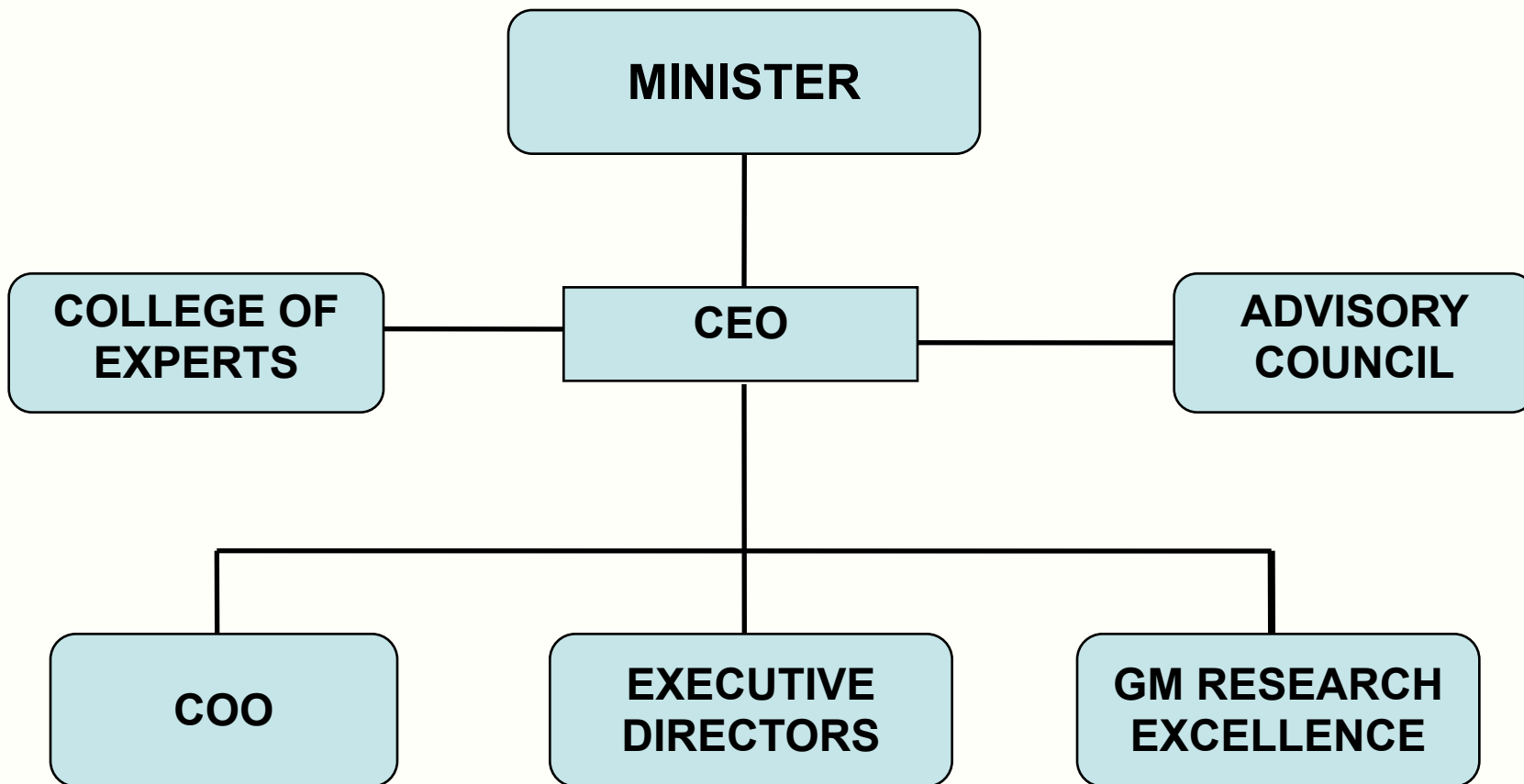




Current Programs

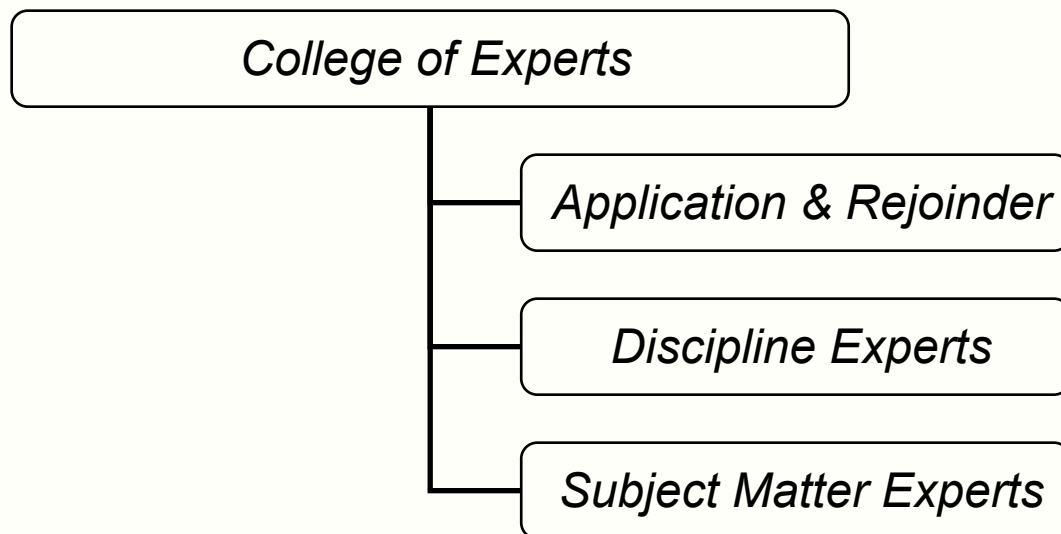
- **Discovery** programs fund individual researchers and projects (**\$315 M**)
- **Linkage** programs help to broker partnerships between researchers and industry, government and community organisations as well as the international community (**\$157 M**)
- **Centres** and **Networks** programs build research scale and focus and strengthen major research partnerships and networks (**\$105 M**)







Selection Processes





Discovery selection criteria

- Investigator(s) (40%)
 - i. track record relative to opportunities
 - ii. capacity to undertake the proposed research
- Proposed project content (60%)
 - i. Significance and innovation (30%)
 - ii. Approach (20%)
 - iii. National benefit (10%)



Linkage Projects Selection Criteria

- **Investigator(s)** **(20%)**
 - i. Track record relative to opportunities and, where relevant, suitability to supervise postgraduate students
 - ii. Capacity to undertake and manage the proposed research.
- **Proposed project content** **(55%)**
 - i. Significance and innovation (25%)
 - ii. Approach and Training (20%)
 - iii. National Benefit (10%)
- **Nature of the alliance, commitment from Partner Organisation(s) and Budget** **(25%)**



Portfolio Selection Criteria

	Discovery	Linkage	Future Fellows
Investigator(s)	40	25	50
Project and/or related	60	55	30
Organisation(s)	0	25	20





How do we achieve a balanced portfolio?

- Design of the Portfolio
- Selection process
- Selection Criteria



Australian Government

Australian Research Council

Balancing the Portfolio

- Degree of risk
 - Project
 - People
- Innovation
- Excellence
- Capacity
- Strategy and outcomes



Selection Processes

- Information sought from applicants
- Comparisons vs absolute scores
- available expertise
- volume



Selection Criteria

- multidimensional
- additive/linked
- excellent in at least one area

To be fundable, say

- Top 50% in all criteria
- Top 10% in at least one criterion



What is the ARC doing?

- Tried some new assessment in LP round 1
- Analysis and future direction paper in progress
- Welcome Feedback
 - Margaret.Sheil@arc.gov.au
 - Ian.McKinnon@arc.gov.au